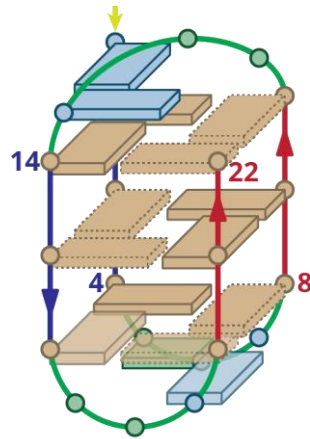


# 22AG

Sequence (5' to 3')	$\epsilon_{260nm}$ ( $M^{-1}cm^{-1}$ )	DOI
AGGGTTAGGGTTAGGGTTAGGG	228500	10.1016/0969-2126(93)90015-9, 10.1038/nature755



**\*This sequence is polymorphic.  
143D (above) is one known  
conformer observed in presence  
of Na<sup>+</sup> cations**

## Legend

↑ ↓ strand direction  
(5' to 3')

1 2 nucleotide number  
(5' to 3')

↓ 5' end

loop

syn

anti

ligand

● adenine

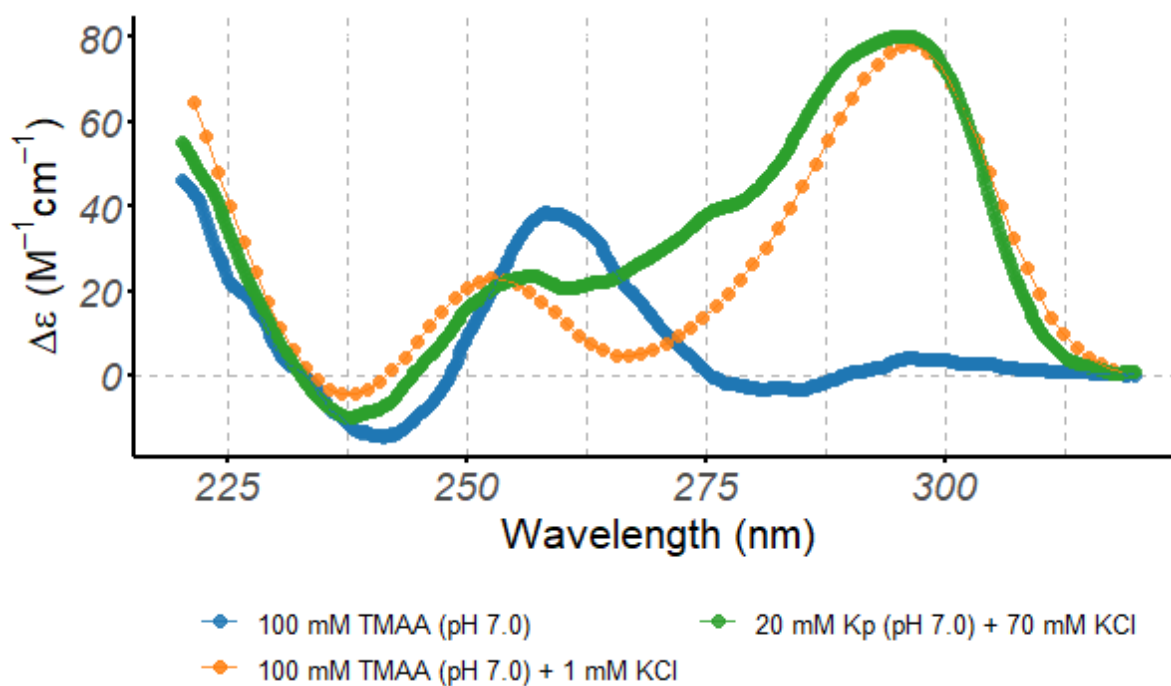
● cytosine

● G-quartet guanine

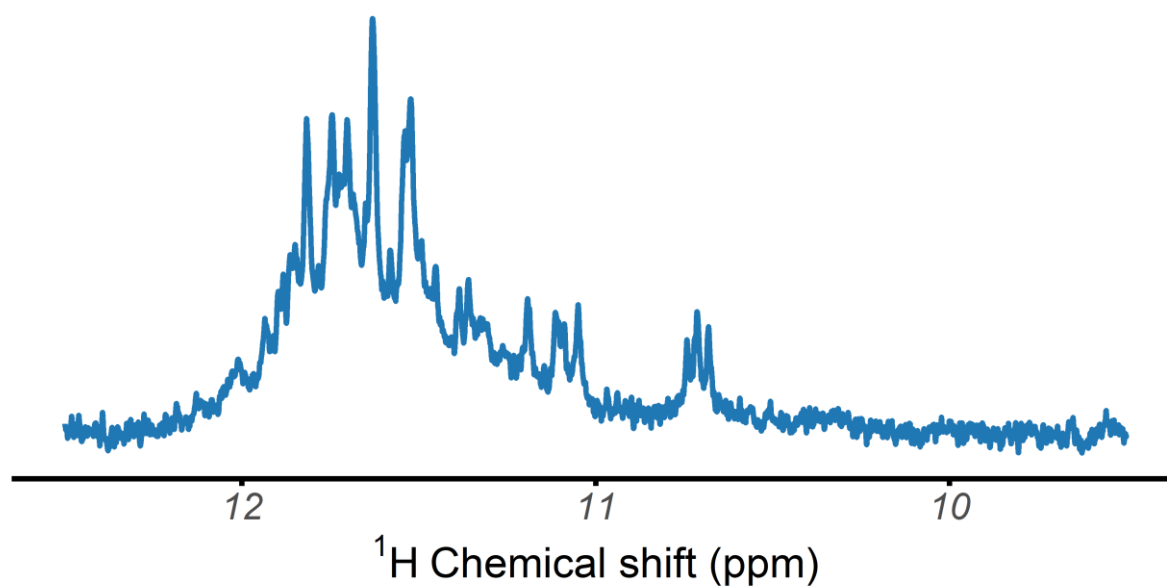
● not-G-quartet guanine

● thymine

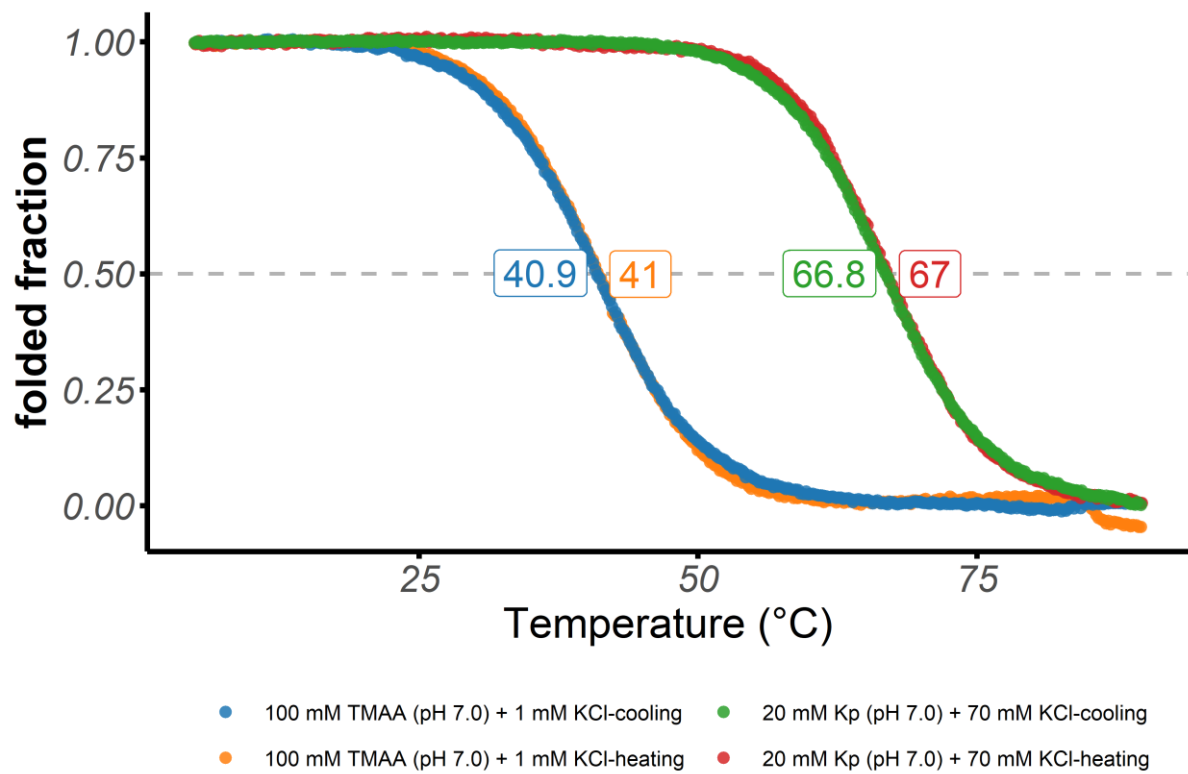
*Structure diagram of 22AG*



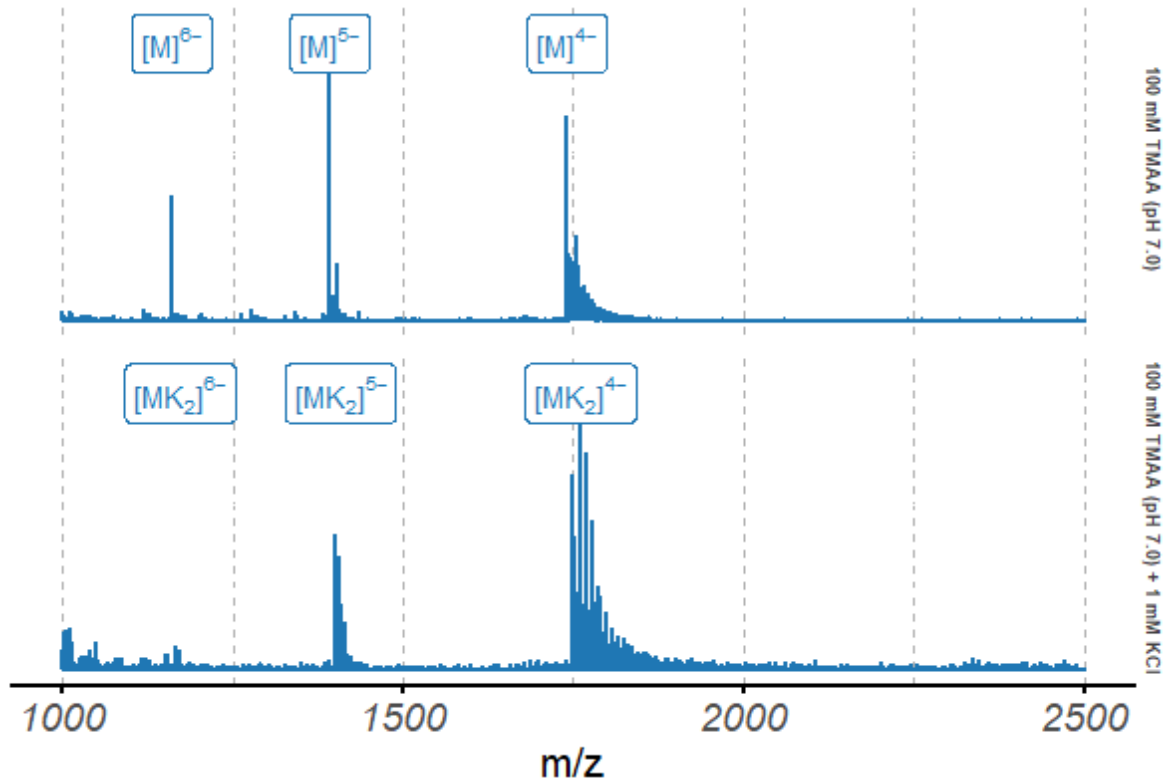
Circular dichroism spectra of the 22AG oligonucleotide (10  $\mu M$ ), acquired at 25°C in 0.4-cm path-length cuvettes



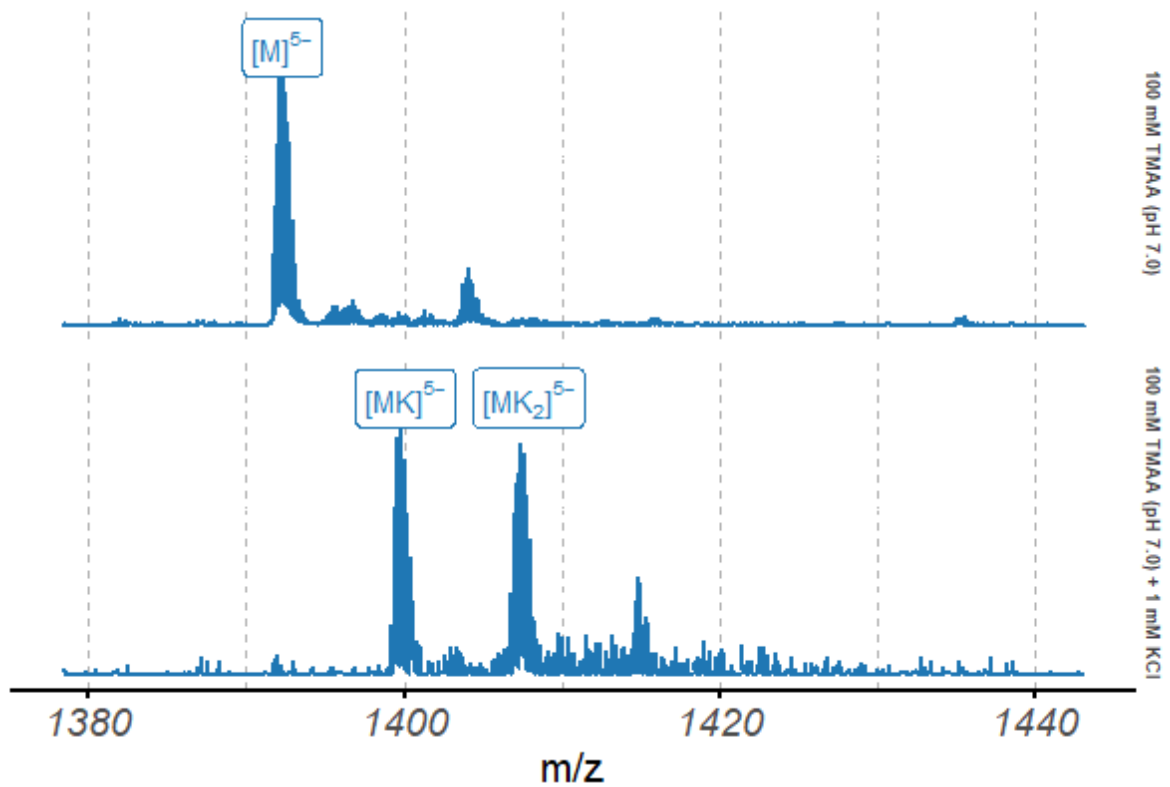
$^1H$ -NMR spectrum of the 22AG oligonucleotide, acquired at 25°C in 100 mM TMAA (pH 7.0) + 1 mM KCl



*Folded fraction of the 22AG oligonucleotide as a function of temperature, determined by UV-melting ( $\lambda = 295 \text{ nm}$ )*



Native ESI-MS spectra of the 22AG oligonucleotide (10  $\mu$ M)



Native ESI-MS spectra of the 22AG oligonucleotide (10  $\mu$ M), focused on the 5<sup>-</sup> charge state